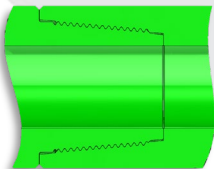
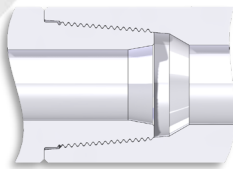


CT-DS™ Double Shoulder

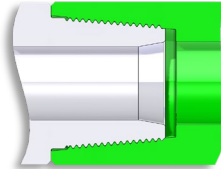
- **Increased torque performance**, the secondary shoulder adds 20 - 50% additional torque compared to API single shoulder connection.
- **Reduced hydraulic pressure loss**, DS offers the same or higher torque to API connection with smaller OD and larger ID.
- **Extended service life**, the secondary shoulder serves as a mechanical stop and provides an “internal seal”, this **reduces internal stress and prevents turbulent washout** at pin nose and box bore.
- **Fully interchangeable** with API connection and other DS connections**.



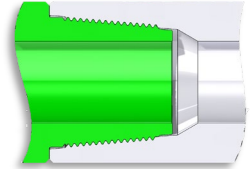
DS50 INTO DS50



NC50 INTO NC50



NC50 INTO DS50



DS50 INTO NC50

Connection*	Tool Joint OD*	Tool Joint ID*	Make-up Torque(ft-lbs)			API Interchangeable
			120Ksi YS	130Ksi YS	140Ksi YS	
DS 38	5.000"	2.563"	15,500	16,800	18,100	NC 38
	127 mm	65 mm				
DS 40	5.250"	2.688"	19,600	21,200	22,900	NC 40
	133 mm	68 mm				
DS 42	5.375"	2.813"	23,100	25,000	26,900	N/A
	137 mm	72 mm				
DS 44	5.500"	2.813"	Conceptual			NC 44
	140 mm	72 mm				
DS 46	6.250"	3.250"	26,000	28,100	30,300	NC 46
	159 mm	83 mm				
DS 50	6.625"	3.250"	43,400	47,000	50,600	NC 50
	168 mm	83 mm				
DS 55	7.000"	4.000"	43,800	47,400	51,100	5 1/2 FH
	178 mm	102 mm				
DS 65	8.250"	4.875"	63,900	69,200	74,500	6 5/8 FH
	210 mm	124 mm				

*For connection and OD/ID configuration not listed above, please consult with Complete Tubular Products

3912 70 Avenue
Leduc, AB T9E 0W1
+ 1(780)980-3644