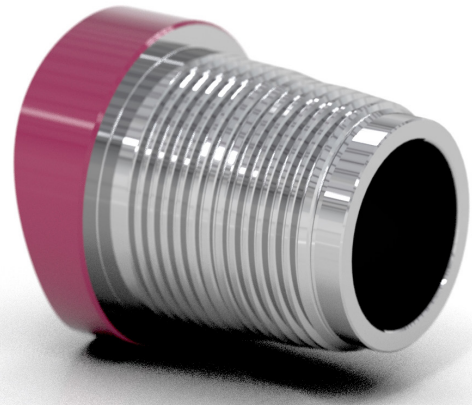




## PREMIUM DOUBLE SHOULDER CONNECTION

- Industry-first multi-taper design
- High torque performance
- Deep stabbing
- Ultra rapid makeup
- Slick full-bore ID
- Threadform **V-038R**



**Bolded** lines represent preferred tool joint configurations having optimized mechanical and hydraulic properties

	Tool Joint OD (mm)	Tool Joint ID (mm)	Tensile Yield (kDaN)	Torsional Yield (ft lbs)	Rec. Makeup Torque (ft lbs)	Max Makeup Torque (ft lbs)
390 DUO	124	65	355	37,200	22,300	24,200
	<b>124</b>	<b>68</b>	<b>326</b>	<b>35,300</b>	<b>21,200</b>	<b>23,000</b>
	127	65	355	39,500	23,700	25,700
	127	68	326	35,500	21,300	23,100
400 DUO	<b>133</b>	<b>68</b>	<b>409</b>	<b>48,600</b>	<b>29,200</b>	<b>31,600</b>
	133	71	377	44,200	26,500	28,700
	137	68	409	48,800	29,300	31,700
	137	71	377	44,400	26,600	28,800
430 DUO	<b>133</b>	<b>76</b>	<b>368</b>	<b>43,400</b>	<b>26,000</b>	<b>28,200</b>
	137	71	417	50,700	30,400	33,000
	137	76	368	43,600	26,100	28,300
433 DUO	<b>133</b>	<b>83</b>	<b>297</b>	<b>35,000</b>	<b>21,000</b>	<b>22,800</b>
450 DUO	137	76	439	48,900	29,400	31,800
	137	83	368	44,100	26,500	28,700
	<b>140</b>	<b>76</b>	<b>439</b>	<b>54,200</b>	<b>32,500</b>	<b>35,300</b>
	140	83	368	44,800	26,900	29,100
480 DUO	<b>143</b>	<b>95</b>	<b>367</b>	<b>42,500</b>	<b>25,500</b>	<b>27,600</b>
	149	89	449	60,400	36,200	39,200