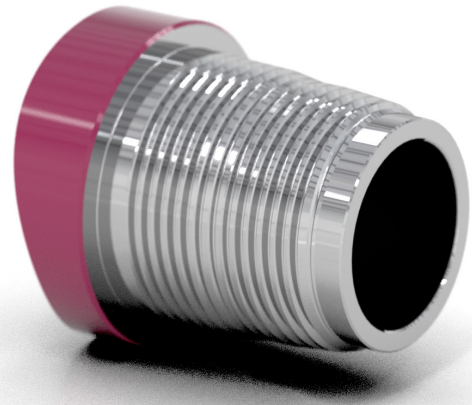




## PREMIUM DOUBLE SHOULDER CONNECTION

- Industry-first multi-taper design
- High torque performance
- Deep stabbing
- Ultra rapid makeup
- Slick full-bore ID
- Threadform **V-038R**



**Bolded** lines represent preferred tool joint configurations having optimized mechanical and hydraulic properties

	Tool Joint OD (in)	Tool Joint ID (in)	Tensile Yield (lbs)	Torsional Yield (ft lbs)	Rec. Makeup Torque (ft lbs)	Max Makeup Torque (ft lbs)
390 DUO	4.875	2.563	799,000	37,200	22,300	24,200
	<b>4.875</b>	<b>2.688</b>	<b>732,000</b>	<b>35,300</b>	<b>21,200</b>	<b>23,000</b>
	5.000	2.563	799,000	39,500	23,700	25,700
	5.000	2.688	732,000	35,500	21,300	23,100
400 DUO	<b>5.250</b>	<b>2.688</b>	<b>918,900</b>	<b>48,600</b>	<b>29,200</b>	<b>31,600</b>
	5.250	2.813	848,600	44,200	26,500	28,700
	5.375	2.688	918,900	48,800	29,300	31,700
	5.375	2.813	848,600	44,400	26,600	28,800
430 DUO	<b>5.250</b>	<b>3.000</b>	<b>826,800</b>	<b>43,400</b>	<b>26,000</b>	<b>28,200</b>
	5.375	2.813	937,800	50,700	30,400	33,000
	5.375	3.000	826,800	43,600	26,100	28,300
433 DUO	<b>5.250</b>	<b>3.250</b>	<b>667,300</b>	<b>35,000</b>	<b>21,000</b>	<b>22,800</b>
450 DUO	5.375	3.000	987,400	48,900	29,400	31,800
	5.375	3.250	827,900	44,100	26,500	28,700
	<b>5.500</b>	<b>3.000</b>	<b>987,400</b>	<b>54,200</b>	<b>32,500</b>	<b>35,300</b>
	5.500	3.250	827,900	44,800	26,900	29,100
480 DUO	<b>5.625</b>	<b>3.750</b>	<b>824,000</b>	<b>42,500</b>	<b>25,500</b>	<b>27,600</b>
	5.875	3.500	1,009,100	60,400	36,200	39,200