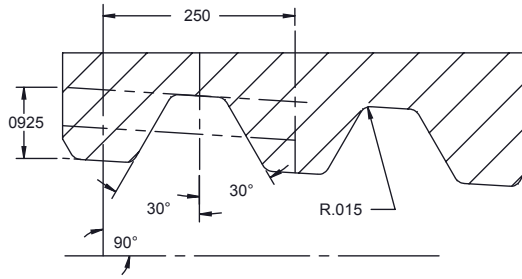


THREAD PROFILE

V-076 - 1.5 TAPER



PITCH

4 THREADS PER INCH
(.250 LEAD)

LEAD TOLERANCE

+ .006 PER 2 INCHES
(.1250 in/in)

TAPER

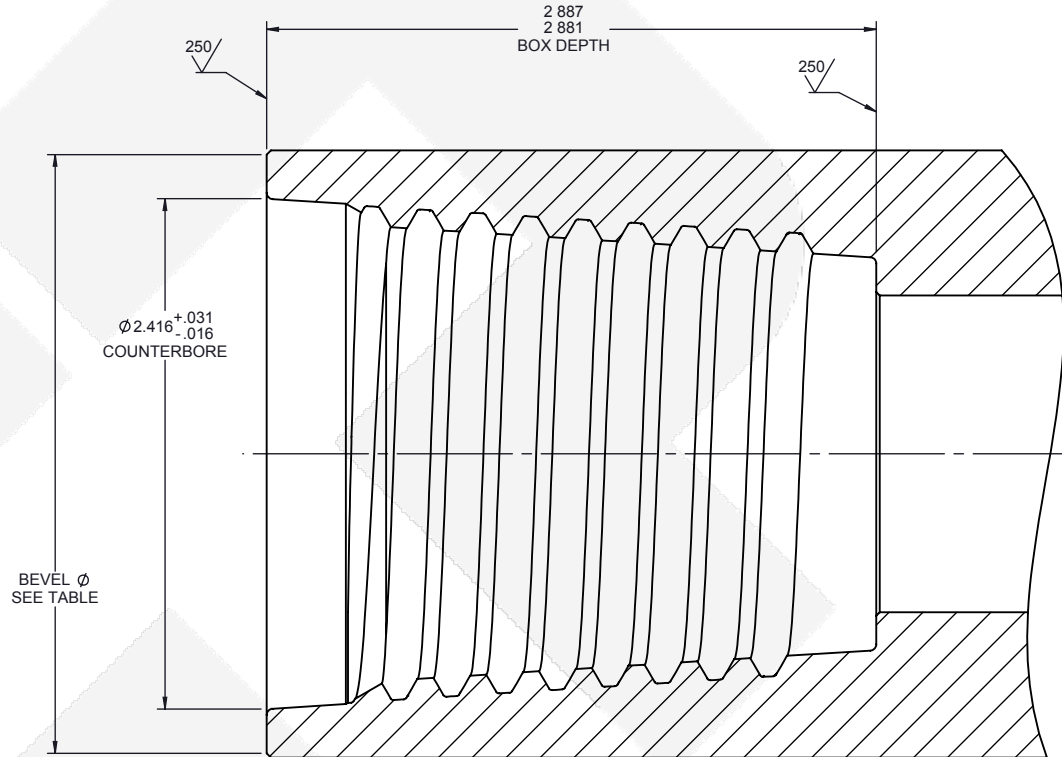
1.5 TAPER PER FT.
(.1250 in/in)

BEVEL DIAMETERS

OD	2.875		
TOOL JOINT BEVEL Ø	2.835		
* TOLERANCE ON BEVEL DIAMETERS IS ±0.016 in			

NOTES:

- FOR OD LESS THAN 2.835" BEVEL DIAMETER IS VOID AND 1/32" X 45° BECOMES EFFECTIVE
- SURFACE FINISH APPLIES AFTER REFACING OPERATIONS



CONFIDENTIAL

THIS DRAWING AND DATA CONTAIN PROPRIETARY INFORMATION WHICH IS CONFIDENTIAL PROPERTY OF COMPLETE GROUP LTD. AND SHALL NOT BE COPIED, REPRODUCED, DISCLOSED TO OTHERS, OR USED IN WHOLE OR IN PART FOR ANY PURPOSE WITHOUT EXPRESS WRITTEN PERMISSION. THIS DRAWING IS LOANED IN CONFIDENCE WITH UNDERSTANDING THAT IT SHALL BE RETURNED ON DEMAND.



3912 70 Avenue
Leduc AB T9E 0W1
www.completegroup.com

TITLE

**CTP 23 BOX FIELD
INSPECTION DIMENSIONS**

REV.	DESCRIPTION	DATE	REV. BY
REVISIONS			

DRAWN	CHECKED	DRAWING #	REV
SC	---	T000145F	0
MAY 24/17	---	SHEET: 1 OF 1	