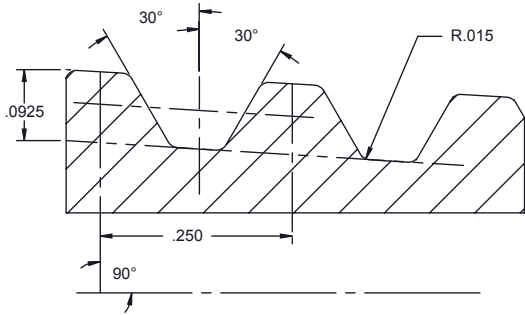


**THREAD PROFILE**

V-076 - 1.5 TAPER



**PITCH**

4 THREADS PER NCH  
(.250 LEAD)

**LEAD TOLERANCE**

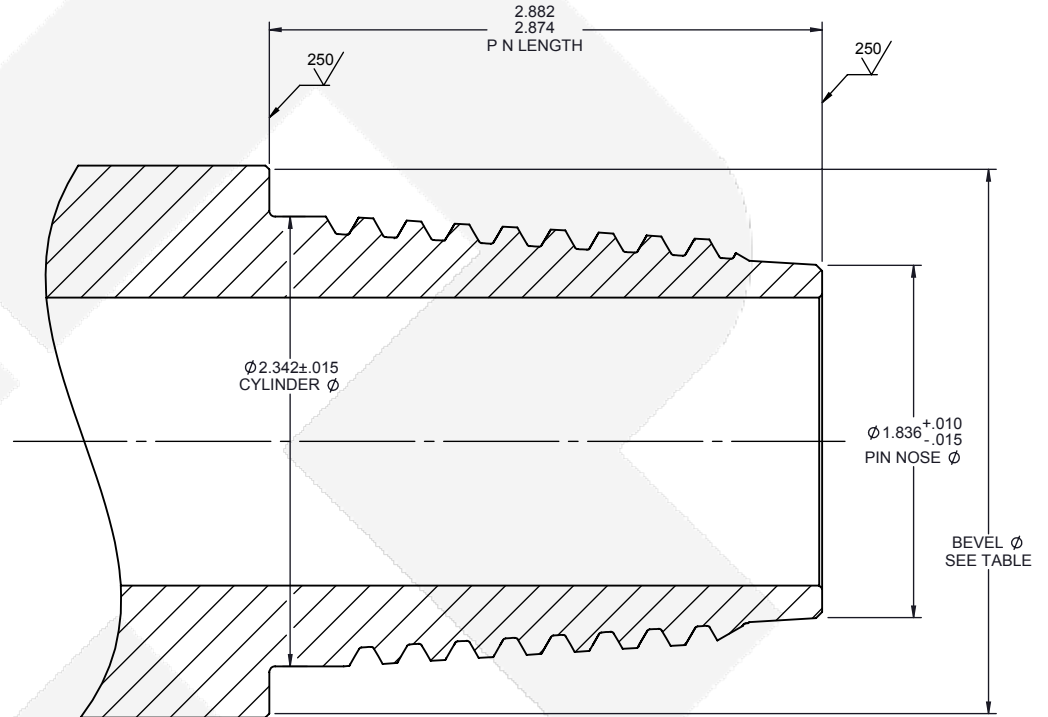
+ .006 PER 2 INCHES  
(.1250 in/in)

**TAPER**

1.5 TAPER PER FT.  
(.1250 in/in)

**BEVEL DIAMETERS**

OD	2.875			
TOOL JOINT BEVEL Ø	2.835			
* TOLERANCE ON BEVEL DIAMETERS IS ±0.016 in				



**NOTES:**

- FOR OD LESS THAN 2.835" BEVEL DIAMETER IS VOID AND 1/32" X 45° BECOMES EFFECTIVE
- SURFACE FINISH APPLIES AFTER REFACING OPERATIONS

**CONFIDENTIAL**

THIS DRAWING AND DATA CONTAIN PROPRIETARY INFORMATION WHICH IS CONFIDENTIAL PROPERTY OF COMPLETE GROUP LTD. AND SHALL NOT BE COPIED, REPRODUCED, DISCLOSED TO OTHERS, OR USED IN WHOLE OR IN PART FOR ANY PURPOSE WITHOUT EXPRESS WRITTEN PERMISSION. THIS DRAWING IS LOANED IN CONFIDENCE WITH UNDERSTANDING THAT IT SHALL BE RETURNED ON DEMAND.



3912 70 Avenue  
Leduc AB T9E 0W1  
www.completegroup.com

**TITLE**

CTP 23 PIN FIELD INSPECTION DIMENSIONS

REV.	DESCRIPTION	DATE	REV. BY
REVISIONS			

DRAWN	CHECKED	DRAW NG #	REV
SC	---	T000144F	0
MAY 24/17	---	SHEET: 1 OF 1	